



EMCN

supporting
newcomers
to thrive

Programs and Services Guide

Winter 2024



What's Inside:

About Us	2
Settlement Services	3
Employment Services	8
Language Services	11
Community Services	13
C5 Collaborating for Change.....	18

Vision

We see a future where many citizens walk with newcomers to bridge their transition into the community.

To achieve this vision, we will serve as key catalysts and lead collaborators in positively shaping the attitudes, behaviours and practices of organizations and individuals to value the diversity newcomers bring to the community.

Mission

To enhance the quality of life for newcomers and all Canadians.

Values

Social Justice
Diversity
Compassion
Responsibility

Who are we?

The Edmonton Mennonite Centre for Newcomers (EMCN) is a government-funded, registered Canadian charity that has evolved into a large and diverse community agency. EMCN was established in 1981 under the direction of a board consisting of appointees from the First Mennonite Church to walk with newcomers in their integration process.

Each year, we serve newcomers from more than 100 countries of origin. Our staff represents a diverse range of languages, faiths, and cultures, and many of us were newcomers who accessed these services ourselves or can personally relate to clients' experiences.

This Guide is an overview of EMCN's support programs and services.

Settlement Services

Newcomer Settlement Info Sessions
Citizenship Application Info Sessions
Citizenship Test Prep Info Sessions
Family Sponsorship Info Sessions
Case Management
ENZO - Edmonton Newcomer Zonal Outreach
ESWIS - Enhanced Settlement Workers in Schools
ESWIS - Parents of Children With Disabilities Support Group
ESWIS - SWELL Program
Rainbow Refuge

Employment Services

Connecting Ukrainians to Employment (CUE)
Culinary Skills Training Program
In Motion & Momentum+ (IM&M+)
Job Ready
Newcomers Essential Skills Training (NEST) Program

Language Services

LINC - Language Instruction for Newcomers to Canada
CNC - Care for Newcomer Children
CBCNC - Community-Based Care for Newcomer Children
ECALA - Community English
ECALA - English for Seniors

Community Engagement & Therapeutic Services

EmpowerHER
Empowered Communities - ethnocultural group capacity building
Global Garden
Global Girls
I-WIN - Immigrant Women's Integrated Network
LEAP - Leadership Engagement Activities Program
New Horizons for Seniors
Safe Families
SKY Club - Supporting Kids & Youth
Therapeutic & Counselling Services
Volunteer Program

Settlement Services



EMCN provides group and one-on-one support to inform and guide newcomer families in accessing resources and services such as:

- Affordable and subsidized housing, income supports and financial services
- Legal aid and health care
- Understanding and accessing government forms, documents and identification
- Affordable transportation and recreation services
- Connection to other community agencies and services

Newcomer Settlement Information Sessions

To help orient newcomers, EMCN offers group information sessions on various topics, including:

- General overview of Canada and its history
- Local and national sources of information in 15 other settlement areas including rights & freedoms, education, transportation, housing and more.

Sessions held online every Tuesday from 10:30 am - 12:00 pm MST. After the info session, EMCN can book a personal follow-up session if you're interested.

Register for a Newcomer Settlement Info Session:

- Call 780-424-7709 or 780-462-6924 or 780-945-2295
- Email info@emcn.ab.ca
- Visit www.emcn.ab.ca/program/settlement-information-orientation



Citizenship Application Info Sessions

EMCN offers group information sessions for first-time Canadian citizenship applicants.

Sessions held online every Tuesday from 2:00 - 4:00 pm MST. After the info session, EMCN can book a personal follow-up session if you're interested.

Register for a Citizenship Application Info Session:

- Call 780-424-7709 or 780-462-6924 or 780-945-2295
- Email info@emcn.ab.ca



Citizenship Test Prep Info Sessions

EMCN offers group information sessions on how to prepare for your Canadian citizenship test.

Sessions held online every Thursday from 2:00 - 4:00 pm MST.

Register for a Citizenship Test Prep Info Session:

- Call 780-424-7709 or 780-462-6924 or 780-945-2295
- Email info@emcn.ab.ca



In 2021-2022 fiscal year, 3,416 clients received individual holistic needs assessments.

" A true community is not just about being geographically close to someone or part of the same social web network. It's about feeling connected and responsible for what happens. Humanity is our ultimate community, and everyone plays a crucial role." - Yehuda Berg



Family Sponsorship Info Sessions

EMCN offers group information sessions on how to sponsor an immediate family member.

Sessions held online every Wednesday from 1:30 - 3:00 pm MST.

Register for a Family Sponsorship Info Session:

- Call 780-424-7709 or 780-462-6924 or 780-945-2295
- Email info@emcn.ab.ca



Case Management

A newcomer family or individual typically works with a caseworker for weeks or months to develop an action plan to reduce identified settlement and integration barriers. With the support of the caseworker or a team-based process, newcomers take manageable steps forward in addressing those barriers.

Newcomers are eligible to access enhanced settlement if they are:

- Immigrant Albertans who are Permanent Residents of Canada
- Refugees under the Immigration and Refugee Protection Act with Convention
- Refugee Status (and have been issued a 'Notice of Decision')

Find out more:

- Visit www.emcn.ab.ca
- Email info@emcn.ab.ca
- Call 780-424-7709



Edmonton Newcomer Zonal Outreach (ENZO)

The Edmonton Newcomer Zonal Outreach (ENZO) program is a collaboration of settlement sector agencies in Edmonton working together under the Urban System Approaches Initiative of Immigration, Refugees and Citizenship Canada (IRCC) to reach out and connect more newcomers to free anglophone and francophone settlement services in Edmonton.

Contact ENZO if you are looking for:

- A job
- Ways to meet essential needs in daily life
- Ways to improve English/French language skills
- Opportunities to learn about and improve health and wellness
- Immigration and legal support
- Educational opportunities
- Income and financial support information
- Ways to connect or integrate into the community
- Childcare supports
- Ways to learn about parenting skills

Find out more:

- Visit www.emcn.ab.ca/program/settlement-zonal-outreach
- Call Newcomer Linkline: 1-833-738-7727



Enhanced Settlement Workers In Schools (ESWIS)

Newcomer families often enroll their children in school, leading to challenges like making new friends, learning English, and understanding the Alberta curriculum. EMCN helps by making schools welcoming with cultural brokering, counselling, and academic support and also facilitates communication between newcomer families, their communities, and schools.

EMCN works with school administrators and parents to determine needs on a student-by-student basis. We have established relationships with many schools in the Edmonton area, but we are always available to any school or parent who requires support. As the demand for services changes yearly, so does the list of schools in which our program operates.

To find out more or access services:

- Visit www.emcn.ab.ca/program/eswis
- Email ESWIScoordinator@emcn.ab.ca
- Call 780-424-7709



Parents of Children with Disabilities

ESWIS Support Group Info Sessions

If you're a newcomer parent with a child with disabilities or underlying health conditions, then join us to find out more on how to access various programs, services and benefits to support your family. Free info sessions held online on Tuesdays from 1:30 - 3:00 pm MST and offered in collaboration with:

- AISH—Assured Income for the Severely Handicapped
- FSCD—Family Support for Children with Disabilities
- PDD—Persons with Developmental Disabilities
- Glenrose Rehabilitation Hospital
- Alberta Health Services
- Service Canada

Find out more:

- Visit www.emcn.ab.ca/program/eswis/eswis-parents-of-children-with-disabilities-support-group
- Register for an ESWIS Support Group Info Session by email to ESWISCoordinator@emcn.ab.ca



ESWIS SWELL Program

ESWIS Social Wellness, Education, Learning & Leadership (SWELL) Program

In addition to workshops and programs offered in collaboration with other service providers, the ESWIS SWELL program is designed for newcomer youth and helps to:

- Address children's developmental needs
- Support healthy lifestyles
- Develop personal life skills

For 2023, free sessions held monthly on Thursdays at Centre High Campus, Queen Elizabeth School and Ross Sheppard School for kids in Grades 3 - 6 from 7 to 12 years of age.

To find out more or access services:

- Visit www.emcn.ab.ca/program/eswis
- Email ESWISCoordinator@emcn.ab.ca
- Call 780-424-7709

'Have pioneered support for LGBTQ refugees and positioned Edmonton internationally as a community that welcomes people who are persecuted for their sexual orientation or gender identity in their country of origin.'



Rainbow Refuge Program

EMCN is here to help LGBTQ+ refugees and newcomers! We offer individualized, holistic services with an LGBTQ+ perspective to guide LGBTQ+ newcomers in their settlement process and address their specific needs and to reduce the number of times a client has to share their story, prevent them from being bounced around, and to help them navigate community safely, and connect to LGBTQ+ friendly services.

We also provide support to:

- Find safe housing
- Access health care – including quick access to hormones for trans clients
- Find affirming spiritual communities
- Look for gender-affirming employers
- Address homophobic incidents
- Connect clients to therapists who are experienced working with LGBTQ+ individuals and are familiar with immigration processes so they can provide private, personalized, therapeutic support.

The LGBTQ+ Refugee Support & Welcome Network, in partnership with the Pride Centre of Edmonton, is also here to help new LGBTQ+ claimants to Canada and guide you through the basis of claim process, answer questions, and support you in your settlement journey.

We can assist you to:

- Find a lawyer and prepare for your hearing
- Apply for a work permit
- Meet new friends

Find out more:

- Visit www.emcn.ab.ca/program/rainbow-refuge-program
- Contact Sara – 780-399-0501 or sbuczynski@emcn.ab.ca
- Contact Basel – 587-938-6869 or bhamrah@emcn.ab.ca



Employment Services

"With my EMCN employment counsellor's outstanding guidance, I landed the job of a Corporate Registry Associate, my dream job, within four months of my arrival in Canada. I cannot thank him enough for giving me confidence and boosting my moral. I will forever be grateful and recommend EMCN to newcomers seeking direction."



Connecting Ukrainians to Employment (CUE) Program

Provides FREE employment services to Ukrainian evacuees (newcomers) impacted by the ongoing war in Ukraine, and helps build employability skills and transition Ukrainian newcomers into the Canadian workforce and achieve financial independence.

Participants will:

- Explore career and employment options with EMCN staff and work collaboratively to achieve goals.
- Receive pre-employment and safety training to improve their job search knowledge (i.e. resume, cover letter, interview skills, etc.)
- Receive ongoing support after employment.
- Gain access to employment and networking opportunities.
- Free employment services to Ukrainian evacuees with a CUAET visa
- Receive ongoing support after employment for 90-day

EMCN offers 2-hour, in-person CUE Welcome Sessions to find out more about the CUE program. Sessions are held every Monday from 10 am—12 pm.

- To register, send an email to: info@emcn.ab.ca or call 780-424-7709.
- Or visit www.emcn.ab.ca/program/connecting-ukrainians-to-employment-cue-program



Culinary Skills Training Program

This is a PAID 12-week program (8 weeks of training with a 4-week practicum) that will give you the opportunity to get a real kitchen experience from an actual Red Seal Chef! Get hands-on training for anyone seeking to enter any aspect of the food service and hospitality industry from fine dining chef to catering, to food truck or large-scale production and institutional careers or possibly even to open up your own restaurant - this is your starting point.

Eligibility:

- Must be 18 years or older to apply.
- Must be legally eligible to work in Canada.
- Must have basic CLB 4 English language skills or higher.

Find out more:

- Visit www.emcn.ab.ca/program/culinaryskillstrainingprogram
- Call 780-423-9509
- Email Mikayla at mstevens@emcn.ab.ca

'Last year, we provided Job Ready support to 1,450 individual clients - 72% of clients were employed, 18% moved on to further education.'



In Motion & Momentum+ (IM&M+)

Is a 13-week, free, action-oriented training program to help stuck individuals move forward at the pre-employment stage of their careers.

This program helps participants with:

- Identifying and building life and employability skills
- Practicing setting realistic and meaningful goals
- Developing and implementing action plans
- Exploring opportunities and roles to connect with family and community

Building momentum toward achieving your goals

- Developing skills, motivation, and hope for the future
- Providing action planning support and coaching as you move toward your work, learning, and personal development goals

Modular-based programming delivered on the following schedule

- In Motion (3 days a week for 3 weeks): 9AM – 3PM
- Momentum (3-4 days a week for 4 weeks): 9AM – 3PM
- Momentum+ (1 day a week for 6 weeks): 9AM – 3PM

Find out more:

- Visit www.emcn.ab.ca/program/in-motion-momentum
- Call 780-424-7709
- Email Karuna at kbhavsar@emcn.ab.ca



Job Ready

The EMCN Job Ready program equips newcomers of all educational backgrounds and levels of experience with employment-related skills and supports to access the Canadian labour market.

Participants receive assistance with:

- Understanding the Canadian workplace culture, Alberta workplace rights and responsibilities
- Exploring further education and training
- Developing a realistic, strengths-based career plan
- Finding employment, education or volunteer opportunities
- Creating resumes and cover letters
- Preparing for interviews
- Connecting with local employers

Find out more:

- Visit www.emcn.ab.ca/program/job-ready-programming
- Email Digna at dlopez@emcn.ab.ca

Employment Services



NEST - Newcomers Essential Skills Training Program

NEST is a 5-month, full-time, applied learning training program that prepares Canadian Language Benchmark (CLB) Level 3 to 5 newcomers and immigrants with the knowledge and skills to participate in the larger social community and economic environment.

The NEST program builds essential and transferable employment skills for enhanced life experiences for participants, as well as offers personalized approach to learning by providing individual coaching sessions, group training focused on applied learning and workplace exposure.

Participants benefit from:

- Increased employability or eligibility for further training
- Increased essential skills competencies
- Enhanced self-confidence in abilities and accomplishments
- Elevated positive attitude to continuous learning
- Demonstrated initiative through innovation
- Make decisions more independently
- Improved resiliency / ability to cope with change

Find out more:

- Visit www.emcn.ab.ca/program/newcomers-essential-skills-training-nest
- Call Digna at 780-423-9687
- Email Digna at dlopez@emcn.ab.ca



Skill Up

A program to assist newcomers in Alberta to improve their job readiness skills, work placement, job retention, and success in the skilled trades industry. This will be achieved by running a foundational and technical skills training initiative for newcomers who want to enter the construction industry and related trades.

- Bridge the gap for newcomers between their existing skills and education, as well as the needs and requirements of Alberta's job market;
- Offer newcomers the opportunity to prepare for and complete the entrance exam for Alberta's apprenticeship programs; and
- Create a pool of qualified newcomers for employers in Alberta to draw from to fill positions in the trades.

Language Services

"I had an opportunity to share my culture and establish my identity in class. What I liked most during class was the 20-minute presentation about sharing our culture and identity. - CLB 6 Student."



Language Instruction For Newcomers To Canada (LINC)

Funded by Immigration, Refugees and Citizenship Canada (IRCC), LINC is a free English language training program for eligible adult learners to improve basic and intermediate reading, writing, listening and speaking skills.

Find out more:

- Visit www.emcn.ab.ca/program/language-instruction-for-newcomers-to-canada-linc
- Call 780-945-2295
- Email LINCadminteam@emcn.ab.ca



Care For Newcomer Children (CNC)

Our CNC program provides care and learning opportunities to children aged 6 months to 5 years while their parent(s) attend Language Instruction for Newcomers to Canada (LINC) classes. On-site childcare is available at Gupta Newcomer Resource Centre located at 11713 82 ST NW Edmonton.

Find out more:

- Visit www.emcn.ab.ca/program/care-for-newcomers-children-cnc
- Call 780-945-2295
- Email LINCadminteam@emcn.ab.ca



Community-Based Care for Newcomer Children (CBCNC)

Learners in LINC classes anywhere in Edmonton may be eligible for childcare at no cost in a licensed daycare or day home for children aged 5 or younger under the Community-Based Care for Newcomer Children (CBCNC) program. ~ According to Alberta Government Subsidy Guidelines

Find out more:

- Visit www.emcn.ab.ca/program/community-based-care-for-newcomer-children-cbcnc
- Email Yohannes at yyirsaw@emcn.ab.ca
- Call 780-239-0507

**'Our CNC program served on average of 202 children
and 131 parents each month in 2022 .'**



ECALA - Community English

English as Another Language (EAL) classes are open to people whose first language is not English. Classes are offered in various locations throughout Edmonton.

Eligibility: The program is best suited for beginner and intermediate English learners.

Find out more or to register:

- Visit www.emcn.ab.ca/program/community-english
- Call Brent at 780-399-0169 or email bpancheshen@emcn.ab.ca
- Call Reception at 780-945-2295



ECALA - English For Seniors

English classes for seniors aged 55 years and older - residency status not considered. Classes run throughout the year at various locations around Edmonton. We also have online and telephone classes. Best suited for beginner and low-intermediate learners.

To learn more or to register:

- Visit www.emcn.ab.ca/program/english-for-seniors
- Call Brent 780-399-0169 or bpancheshen@emcn.ab.ca
- Call Reception at 780-945-2295

Community Programs & Therapeutic Services



EmpowerHER

EmpowerHER provides immigrant women with the tools and resources needed to unlock their goals to succeed in their careers and businesses, and achieve financial independence.

Participants receive:

- Empowering workshops that develop new skills and knowledge through hands-on learning experiences.
- Increased self-confidence and self-awareness.
- Improved communication and networking skills.
- Mentoring and one-on-one coaching from experienced professionals.
- Access to a supportive network and community of like-minded women.
- Exposure to a variety of career paths, industries and resources.
- Knowledge about entrepreneurship and business development.

Child care provided (limited spaces available).

Find out more:

- Visit www.emcn.ab.ca/program/empowerher
- Email Fardowsa at fbille@emcn.ab.ca
- Email Ala at aeltayb@emcn.ab.ca



Empowered Communities

EMCN's Empowered Communities program partners with ethnocultural community groups and organizations to develop their capacities and access resources to meet their goals.

We use an empowering process that engages strengths and assets to build community and organizational capacity. Our team meets with your group to learn more about your goals and what you do, and areas where we can support you. We will work with you and connect you to other resources to help you accomplish your goals.

- Ethnocultural community groups benefit from:
- Support to identify community needs and priorities, and plan ways to address them
- Program design, delivery and evaluation support
- Coaching and workshops in board development, strategic planning, grant writing, community engagement, volunteer recruitment, and more
- Invitations to community events to share with their members
- Access to regular workshops on organizational development

Find out more:

- Visit <https://emcn.ab.ca/program/community-leadership/>
- Email Matthew at mhundert@emcn.ab.ca
- Call 780-424-7709

Community Programs & Therapeutic Services



Global Garden

Global Garden engages newcomer and Canadian-born gardeners to work together and learn from each other by growing vegetables, flowers and fruit on our plot at Edmonton Urban Farm (11312 79 ST NW).

Global Garden members collaborate monthly to plan, plant, tend, and harvest a community garden. They also decide on garden activities, workshops, and workdays, and watering days are organized several times weekly during the growing season.

For more information:

- Visit www.emcn.ab.ca/program/global-garden
- Call 780-424-7709
- Email info@emcn.ab.ca



Global Girls

Global Girls is a safe space for young women, from 15-21 years old, to make new connections, build their self-confidence, and explore their identity. This is a hybrid drop-in program driven by participants' needs and interests: they help decide what topics they want to learn about together and what activities they want to do. Global Girls also creates opportunities to connect with role models and network support in the community.

Find out more:

- Visit www.emcn.ab.ca/program/global-girls
- Email globalgirls@emcn.ab.ca
- Call 780-424-7709



Immigrant Women's Integration Network (I-WIN)

I-WIN empowers women to create their envisioned lives in Canada by connecting them with the community and providing employment, settlement support, and tools to realize their talents and passions. Classes are offered virtually and in person.

Participant eligibility:

- Possess education or professional experience in their home countries
- Be a female permanent resident or refugee claimant
- Possess language proficiency of Canadian Language Benchmark 4 or higher in speaking and listening

For more information:

- Visit www.emcn.ab.ca/program/i-win
- Email iwin@emcn.ab.ca

Community Programs & Therapeutic Services



LEAP - Leadership Engagement Activities Program

LEAP is a newcomer youth program to help them develop leadership skills through civic experiences in the City of Edmonton and through community volunteer opportunities so they can increase their community and personal networks and develop friendships. For youth aged 15 to 25 years of age with at least basic spoken English skills.

Find out more:

- Visit www.emcn.ab.ca/program/leap/
- Call 780-200-3684 or 780-424-7709



New Horizons for Seniors

New Horizons Seniors Program includes online English conversation circles that focus on communication for daily life. Seniors also participate in cooking sessions, volunteering, and other activities to apply what they learn and make connections in the community.

These programs are open to seniors with any immigration status.

For more information and to register:

- Email An To at anto@emcn.ab.ca
- Call 780-424-7709



Safe Families

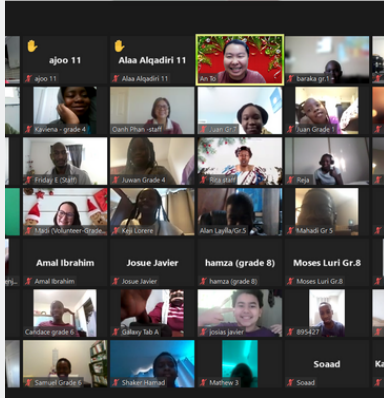
The Safe Families program enhances settlement and integration into the Canadian society by understanding the values that will allow one to meet the expectations of settling and integrating smoothly. It is a program for newcomer men and boys. It focuses on sharing conversations and knowledge about healthy relationships and preventing domestic violence. The men and the boys have separate conversations facilitated by knowledgeable and experienced individuals.

For more information and to register:

- Visit www.emcn.ab.ca/program/safe-families
- Call 780-424-7709 or 780-200-3684

"I truly believe the program should be mandatory. The waiting list for the I-WIN program should be as long as the Saskatchewan River. I hope it will run for a long, long time. I can but imagine how much women and families would miss out if they did not know about I-WIN."

-Sabrine Mzad



Supporting Kids & Youth (SKY) Club

This mentorship program assists elementary, junior high, and senior high students with academic and other school needs. It also fosters social skills, self-esteem, and confidence while providing field trips, volunteering, and skill development opportunities. The program runs on Saturdays with community service-learning students and volunteers serving as tutors and mentors. It aims to prevent school dropouts, drug use, and gang involvement and prepare participants for societal success.

For more information and to register:

- Visit www.emcn.ab.ca/program/sky-club
- Call 780-424-7709 or 780-200-3684



Volunteer Program

While our volunteers come from diverse walks of life, they share their passion for community and desire to make a meaningful difference and make lasting friendships worldwide.

Join our team of exceptional volunteers today:

- Visit www.emcn.ab.ca/volunteer

'During 2021-22, a total of 4415 therapy sessions were given, comprising of 4278 sessions for individuals and 137 sessions for family/couples counselling.'



Therapeutic & Counselling Services

Newcomers to a new country face challenges that can lead to high stress, isolation, role shifts, financial difficulties, marital problems, and parent-child conflict. They may also carry trauma from their past, leading to PTSD, depression, and anxiety, which can impede their integration. EMCN provides community-focused therapy and counselling to address these challenges.



EMCN therapeutic services team members are:

- Highly-trained psychologists, licensed therapists and social workers
- Trauma-informed therapy practitioners who consider cultural perspectives, immigration processes, and gender expectations and expressions

How does the program work?

- To overcome barriers to accessing services, we offer therapeutic services in different Edmonton office locations, schools, and homes (when feasible).
- Interpretation services can also be made available.
- We recognize that building resilience and overcoming trauma and loss includes more than traditional therapy. Our therapeutic services are embedded in the larger agency; therapists connect newcomers to social workers and other services to enhance their resilience and ability to function in their new environment.
- NOTE: sessions are by appointment only. No walk-ins.



Fees and eligibility:

- There is no fee/cost for EMCN's therapeutic and counselling services.
- Immigrants and refugees born outside of Canada, regardless of the length of stay in Canada (immigration status), are eligible.
- Children under 18 years of age of parents born outside of Canada are also eligible.



Locations:

- EMCN Central – 10170 – 112 Street NW
- Gupta Newcomer Resource Centre – 11713 – 82 Street NW
- EMCN Welcome Centre for Immigrants (WCI)
200, Tower II, Millbourne Market Mall – 7609 38 AVE NW
- Online services are available as well.

For more information:

- Visit www.emcn.ab.ca/program/therapeutic-counselling-services
- Email therapy@emcn.ab.ca
- Call 780-424-7709 or 780-695-7473



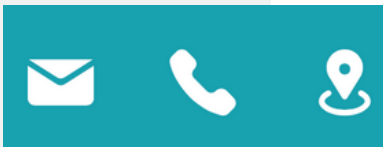
C5 organizations support and empower:

- Indigenous individuals and families
- Some of the most economically, socially, and culturally marginalized children, youth and adults in the Edmonton area
- Newcomers, immigrants and refugees
- Vulnerable children and their families
- Teen parents



C5 Northeast Hub brings many supports into one place.

Life and living in Edmonton can be complicated at times to navigate, and families are often unable to access available supports. The C5 collaborative is dedicated to breaking down those navigational barriers so community members can get exactly where they need to go!



Connect With C5 Northeast Hub

14017 Victoria Trail NW
Edmonton, AB T5Y 2B6
780-456-1484

5

Agencies collaborating for
change.

Our Partners



Notes

[illegible]

www.emcn.ab.ca

CONTACT US



EMCN Central

10170 112 Street NW
Edmonton, AB T5K 2L6
(780) 424-7709
8:30 am - 4:30pm / Mon - Fri

EMCN Welcome Centre for Immigrants (WCI)

200, Tower II, Millbourne Market Mall
7609 38 Ave NW, Edmonton, AB T6K 3L6
(780) 462-6924
8:30 am - 4:00 pm / Mon - Fri

Gupta Newcomer Resource Centre formerly called EMCN Language Centre

11713 82 Street NW
Edmonton, AB T5B 2V9
(780) 945-2295
8:30 am - 4:30 pm / Mon -
Fri

C5 North East Hub

14017 Victoria Trail NW
Edmonton, AB T5Y 2B6
(780) 456-1484
9:00 am - 4:00 pm / Mon - Fri